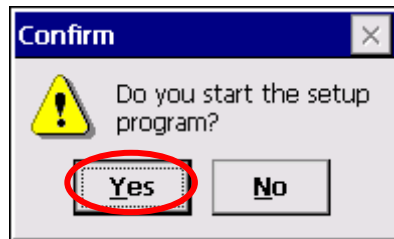
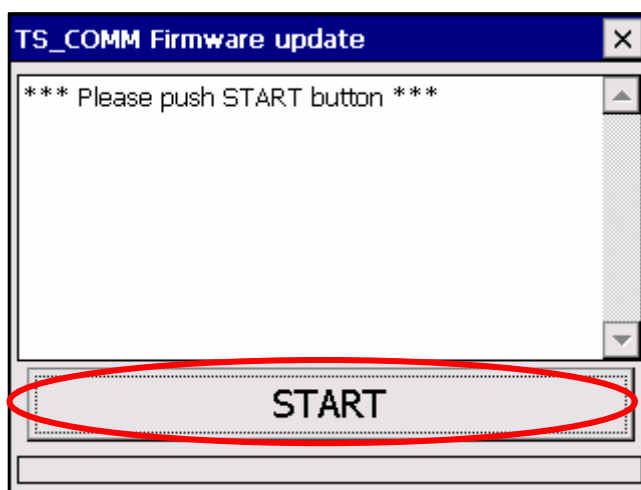


Install procedure of TS COMM Firmware

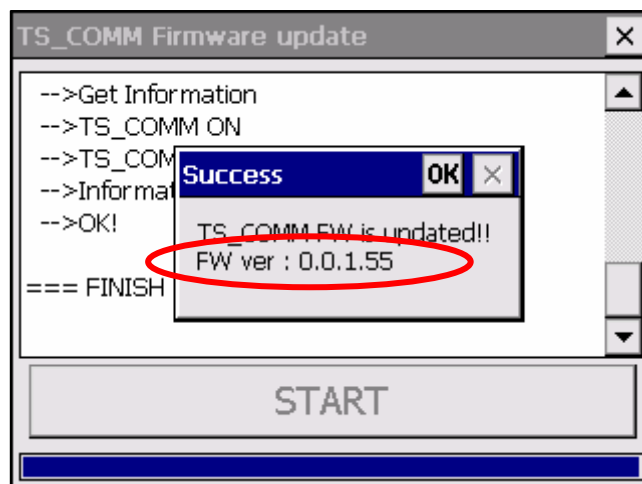
1. Unzip the ZIP file to anywhere.
2. Place the installer, Setup.exe, on the root of USB flash memory.
3. Insert the USB flash memory into a USB port of Total Station.
4. Boot Total Station in Update Mode.
 - Press keys, [LIGHT] + [TARGET] + [POWER], at the same time.
5. Press [Yes] button to launch the installer.



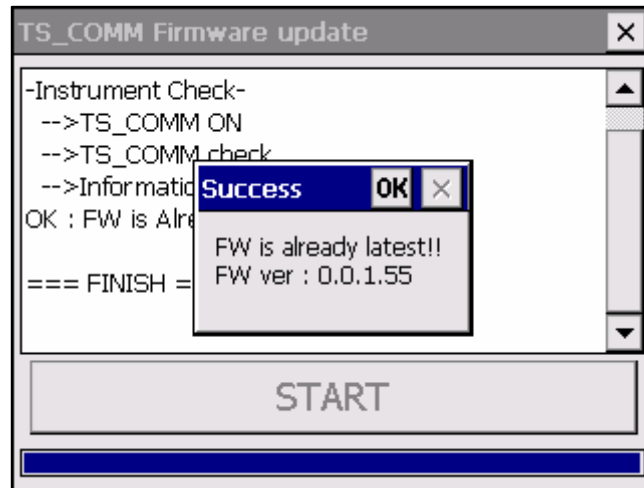
6. Press [START] button to update the TS_COMM firmware when the installer window appears as follows.



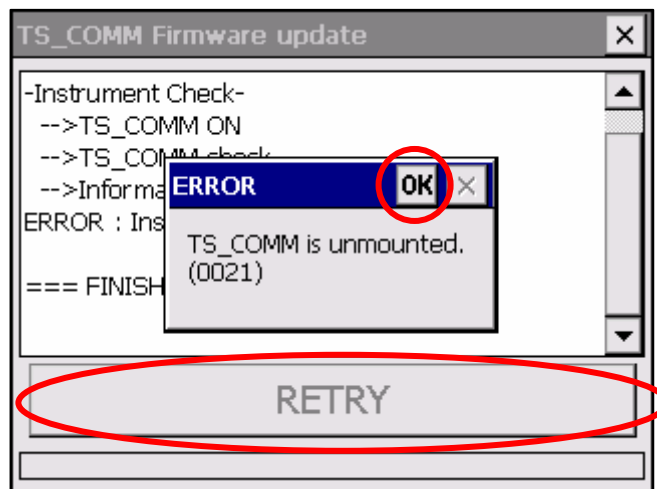
7. The following window appears when the installing process is complete. Make sure that version of TS_COMM FW is **0.0.1.55**.



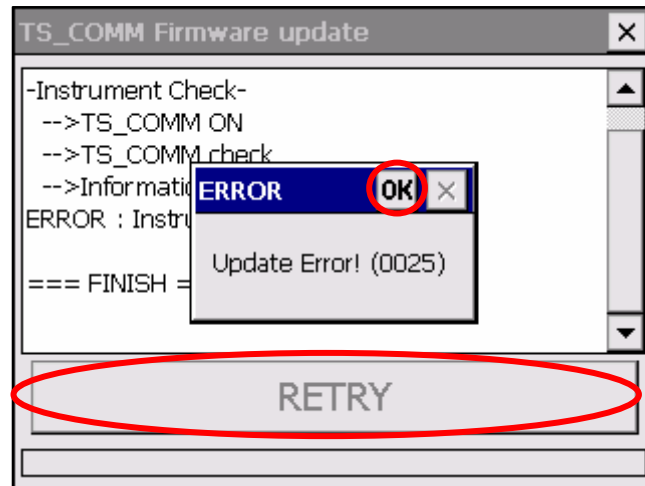
- In case of the following window appears.
TS_COMM firmware is already latest. Please perform the next step.



- In case of the following window appears.
Total station does not have TS_COMM. Please perform the next step.



- In case of the following window appears.
Please press [RETRY] button to retry the update after pushing [OK] button.



8. Press [OK] button and push [ESC] key.
9. If the Total Station has successfully rebooted, the process is done.