

DIGIROLLER™ PLUS III

DIGITAL MEASURING WHEEL Model 6575

USER'S GUIDE

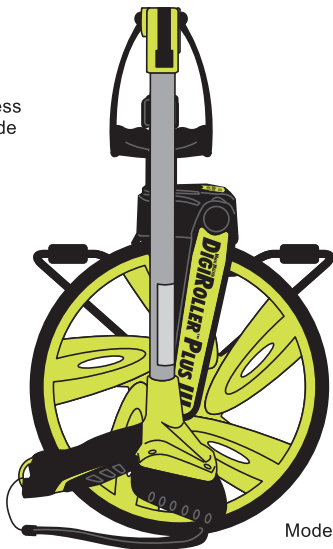
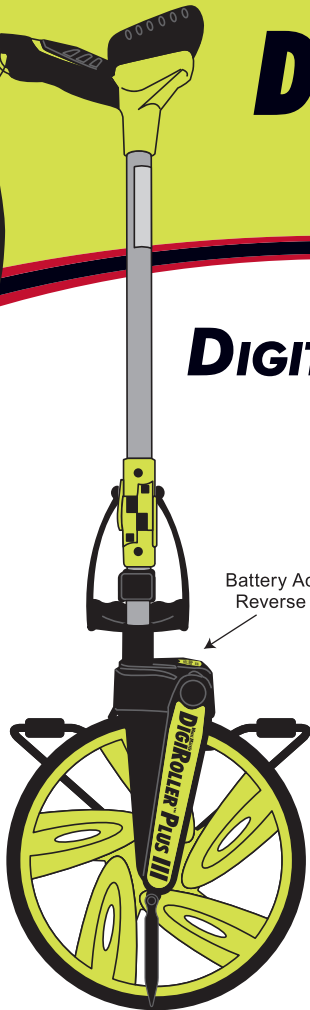
WHEEL MASTER
DIGIROLLER™ PLUS III



**CALCULATED
INDUSTRIES®**

DIGIROLLER™ PLUS III

DIGITAL MEASURING WHEEL



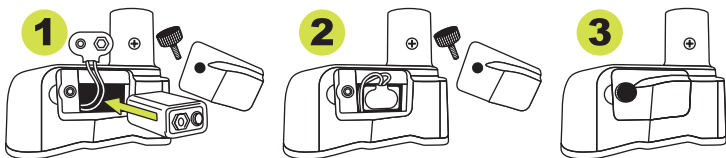
Model 6575

SPECIFICATIONS

Measuring Range:	0 to 9,999,999 (Yards, Meters)
Wheel Accuracy:	99.5%
Internal Math Accuracy:	12 digits
Display Capacity:	9,999,999 (7 digits)
Speed Limit:	12 mph (19 km/h)
Auto Shut-Off:	8-9 minutes (Backlight shuts off after 90 seconds of inactivity)
Length (Extended):	41 inches (104 cm)
Length (Folded):	22 inches (56 cm)
Weight:	4.1 lbs (1.9 kg)
Battery:	One 9V Battery
Battery Life:	100 hours, results will vary based on rolling conditions and battery brand used.
Operating Temperature:	32°F - 104°F (0°C - 40°C)
Storage Temperature:	-4°F - 140°F (-20°C - 60°C)
Wheel Size:	Diameter: 12.6" (32 cm) Circumference: 3.3' (1 m)

BATTERY

The **DIGIROLLER PLUS III** is powered by one 9V battery (included). Rechargeable batteries not recommended. This should last approximately 100 hours (one year of normal use). To replace the battery, remove the battery compartment cover located just above the wheel (on the kickstand side). Replace the battery and compartment cover.





BUTTONS

On/Clear Turns power On. Used to clear the display. Press and hold for more than one second to turn unit Off.



Off Press [Set] [On/Clear] or press and hold [On/Clear] for more than one second to turn the unit Off.

Clear All Press [Set] [Start/Stop] to perform a Clear All, which clears all values and resets all settings.

Set Used with other keys to access second functions.**

Units Changes units of measurement of the displayed value.

Linear: feet-inch, inches, decimal feet, yards, meters

Area: sq. feet, sq. yards, acres, sq. meters, hectares

Volume: cu. feet, cu. yards, cu. meters

Rcl Used with other keys to recall stored values.**

MC Press **[Set]** **[Rcl]** to clear all values in the Accumulative Memory.



Backlight Used to turn display's backlight On and Off. To save battery power, the light automatically shuts off after 90 seconds of non-use.

Length Stores an active measurement as Length.

Circle Press **[Set]** **[Length]** to access Circle calculations, starting with Circle Area. If accessed while an active measurement is displayed, the measurement is stored as Length (Diameter) before immediately displaying Circle Area. Continue to press **[Length]** for Circumference, Circle Volume* and Circle Wall Surface Area* calculations.

Width/LxW Stores an active measurement as Width and immediately displays the resulting Area. Continue to press for Perimeter, Volume* and Wall Surface Area* calculations.

LxWxH Press **[Set]** **[Width/LxW]** to display Volume*. If accessed while an active measurement is displayed, the measurement is stored as Width before immediately displaying Volume.

M+ Adds displayed value to Accumulative Memory.

M- Press **[Set]** **[M+]** to subtract displayed value from Accumulative Memory.

Start/Stop Used to start and stop measuring. Pressing while rolling a measurement places the unit in Stop mode, which pauses the measurement. Pressing while in Stop mode places the unit in Start mode and resumes measuring.



+1/2 Wheel Adds the wheel radius (first press) or diameter (second press) to the current linear measurement, to allow for true wall-to-wall distance. A third press returns to the original measurement.

Height Press **[Set]** **[+1/2 Wheel]** to enter the Height setting mode. Upon entry, roll the desired Height measurement and press **[Set]** to store it.

* Requires stored Height.

** Pressing while rolling a measurement places the unit in Stop mode.

ACCUMULATIVE MEMORY (M)

Linear, area and volume values can be added and subtracted at any time. Each type is separately maintained, allowing each to have a running total, average and total count.

Memory Recall Press **[Rcl]** **[M+]** to display the total of the first unit type. The next two presses of **[M+]** display the total's average and total count, respectively.

Continue to press **[M+]** to display the total, average and total count of any other stored unit types.

Memory Clear Press **[Set]** **[Rcl]** to clear all values stored in Accumulative Memory.

MEASUREMENTS AND CALCULATIONS

For best results:

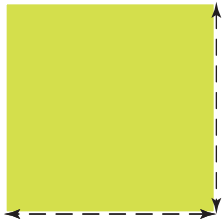
- Roll in the desired direction up to the start of your measurement, clear the display, then begin your measurement.
- Handle position at start and end of measurement should be similar. Handle movement in between does not affect the final result.

Measurement

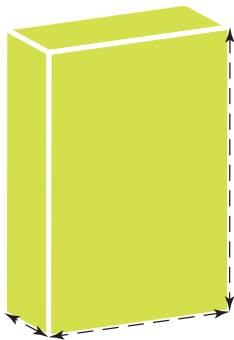


1. Press **[On/Clear]**
2. Roll wheel
3. Press **[Start/Stop]** to pause measurement; press again to resume

Area, Perimeter (LxW)

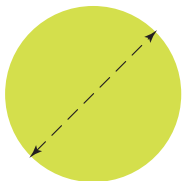


1. Press **[On/Clear]**
2. Roll Length distance, press **[Length]** **[On/Clear]**
3. Roll Width distance, press **[Width/LxW]** (*Area*)
4. Press **[Width/LxW]** (*Perimeter*)



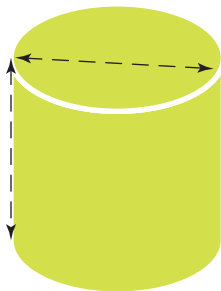
Volume, Wall Surface Area (LxWxH)

1. Press **[On/Clear]**
2. Enter Height mode via **[Set] [+1/2 Wheel]**
3. Roll Height distance, press **[Set] [On/Clear]**
4. Roll Length distance, press **[Length] [On/Clear]**
5. Roll Width distance, press **[Set] [Width/LxW]** (*Volume*)
6. Press **[Width/LxW]** (*Wall Surface Area*)



Circle Area, Circumference

1. Press **[On/Clear]**
2. Roll Diameter distance, press **[Set] [Length]** (*Circle Area*)
3. Press **[Length]** (*Circumference*)



Circle Volume, Wall Surface Area

1. Press **[On/Clear]**
2. Enter Height mode via **[Set] [+1/2 Wheel]**
3. Roll Height distance, press **[Set] [On/Clear]**
4. Roll Diameter distance, press **[Set] [Length] [Length] [Length]** (*Volume*)
5. Press **[Length]** (*Wall Surface Area*)

CARING FOR YOUR DIGIROLLER PLUS III

If operating in wet weather conditions, cover the head with a clear, light-weight plastic bag. You will be able to see the LCD and operate the keypad.

Keep in a dry area when transporting or storing.

Do not exceed recommended operating temperature (104°F/40°C) for extended periods.

Do not exceed speed of 12 mph (19 km/h).

Do not stack any objects on your **DIGIROLLER PLUS III**.

ERROR CODES, AUTO-RANGE, RESET

Display

OFLO

Lo bAtt

bAd bAt

Error Type

Overflow – Measurement too large to display.

Low battery – Maximum of 8 hours of use remains.

Bad battery – Do not use device until new battery is installed.

Auto-range — If the displayed value is too large to display in the selected units of measurement, it will be displayed in the next larger units instead of displaying OFLO. For example, 10,000,000 INCH cannot be displayed, so 833,333.3 FEET will be displayed instead.

Reset — If your device should ever "lock up," remove the battery and leave it out for at least 30 seconds. Then reinsert it. See Battery section.

WARRANTY AND REGISTRATION

Your **DIGIROLLER PLUS III** is covered by a Limited 2-Year Warranty. To view the warranty and to register this product, go to www.calculated.com/register.



**CALCULATED
INDUSTRIES®**

Printed in Taiwan.
UG6575E-B

4840 Hytech Drive, Carson City, NV 89706 USA
1-775-885-4900 • www.calculated.com

