

# SurvCE/PC



The world's most robust and flexible data collection software

*There's a reason surveyors make Carlson their first choice in data collection software. SurvCE (for Windows Mobile) and SurvPC (for Windows) combine advanced functionality, ease-of-use, and cutting-edge features with excellent service and award-winning technical support.*

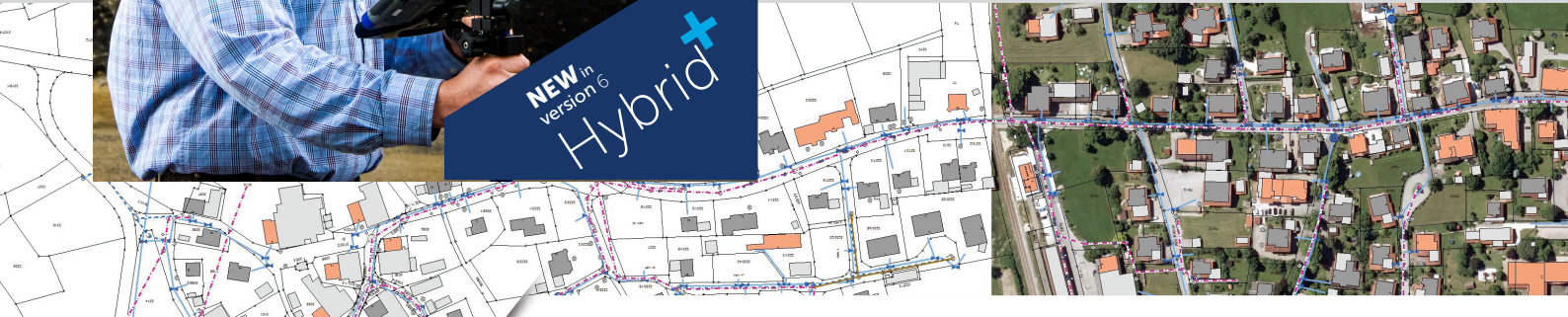
*Both SurvCE and SurvPC support the widest range of popular and newly released RTK GPS and conventional and robotic total stations, putting the power of Carlson's in-field coordinate geometry at your fingertips.*

**Just a few of the powerful features to help you get your job done faster and better:**

- **Advanced Roading:** favored by U.S. DOTs and heavy highway contractors around the world
- Cutting-edge **functionality for staking intersections** and cul-de-sacs using Carlson Road Network files
- **Optional Field-to-Finish:** Create drawings intuitively and automatically as you work, saving you time back in the office
- **Highly graphical and intuitive user interface** is designed 'by surveyors for surveyors'
- **Strong GIS features** for accurate data capture, including attribute data and seamless linking to Esri®
- **Easy data exchange** due to rich support of CAD file formats and .dwg, .dgn, .shp
- **More field capabilities** with quick and easy volume calculation and ability to generate points from polylines
- **Cut/Fill stakeout** using surface files
- **Camera integration** allowing assignment of picture to points or lines
- **Export directly in KML format** for fast control in Google Earth
- **True versatility:** SurvCE and SurvPC run on hundreds of GPS and total station models in service today, including Altus, Ashtech, Carlson, Geomax, Leica, Pentax, Sokkia, Spectra-Precision, Stonex, Topcon, and more. See full list at [www.survce.com](http://www.survce.com).
- **SurvCE/PC are available in more than two dozen languages:** English, Spanish, German, French, French (Canadian), Russian, Portuguese, Czech, Dutch, Chinese, Korean, Greek, Italian, Polish, Hungarian, Swedish, Latvian and more.



NEW in  
version 6  
Hybrid+



BREAK NEW GROUND

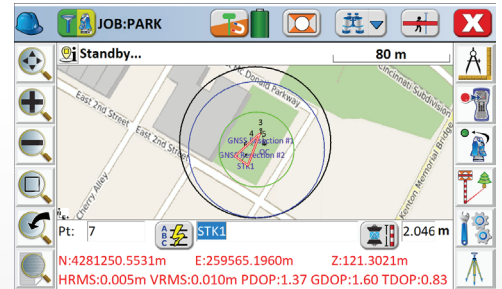
## See what's new in Carlson SurvCE/SurvPC 6.0!

### SurvCE/PC 6.0 deliver on accuracy and efficiency:

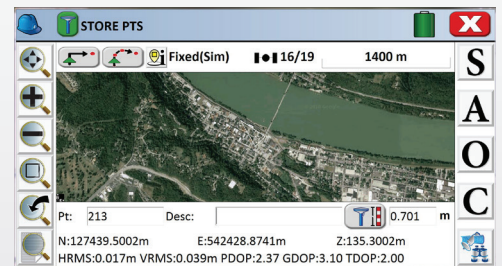
- **Enhanced Search icon** now available in all live survey screens with access to multiple search methods for TS/RTS
- **Voice prompting In Stakeout** allows users to keep their eyes on the environment while staking
- **Google, Open Street Maps, Esri® Maps**, and your own WMS overlays now available in the field
- **GIS Inspector** allows instant access to GIS attributing in the map screen
- **Surface Inspector** enables easy comparison of plan vs. as-built in elevation difference, making it simpler to store and stake the points that matter
- **Obstructed Point Stakeout** allows guided staking of unreachable points by marking azimuth and distance
- **Automatic Backsight Check** in the joystick screen makes it easier to check your setup at any time
- **GPS Tolerance Band** instantly indicates when a tolerance is exceeded in live survey screens

### All-new Hybrid+ module combines the power of RTS and GNSS providing the most reliable and fast survey techniques on the market:

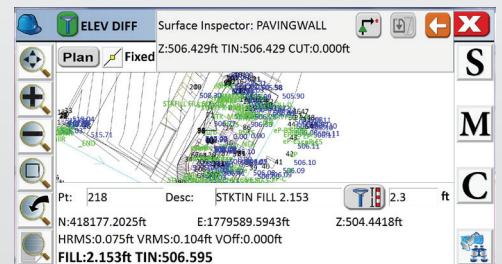
- **Mix and match** any RTS and GNSS from Carlson's vast driver library
- **GPS Search** is faster than any search method available
- **Follow Me** keeps the total station pointed where you need it by continuously tracking the GNSS location
- **Smart Lock** detects when you are slowing down to take a measurement and automatically locks on the prism—ready when you are
- **Smart Staking** provides directions from the GNSS when the total station position isn't available, then automatically locks back on the prism when you reach your destination
- **Backup Tracking** — GPS position is automatically shown when total station is not tracking
- **GNSS Sensors work with the total station** to allow e-level in total station mode and automatic correction of tilted poles



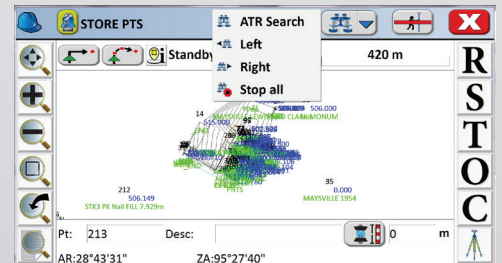
Hybrid+, IMU, Backup Tracking, Open Street Maps



Google map



Surface Inspector



New search icon in top bar